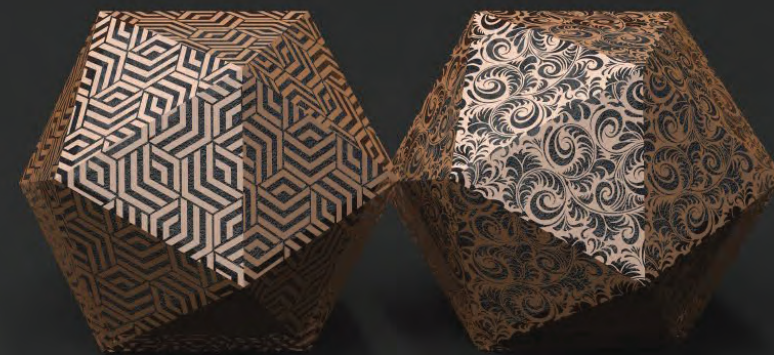


E-commerce Boxes

All the details

Open it! The future is here.





E-COMMERCE BOXES



TYPE OF BOXES



LID AND BOTTOM

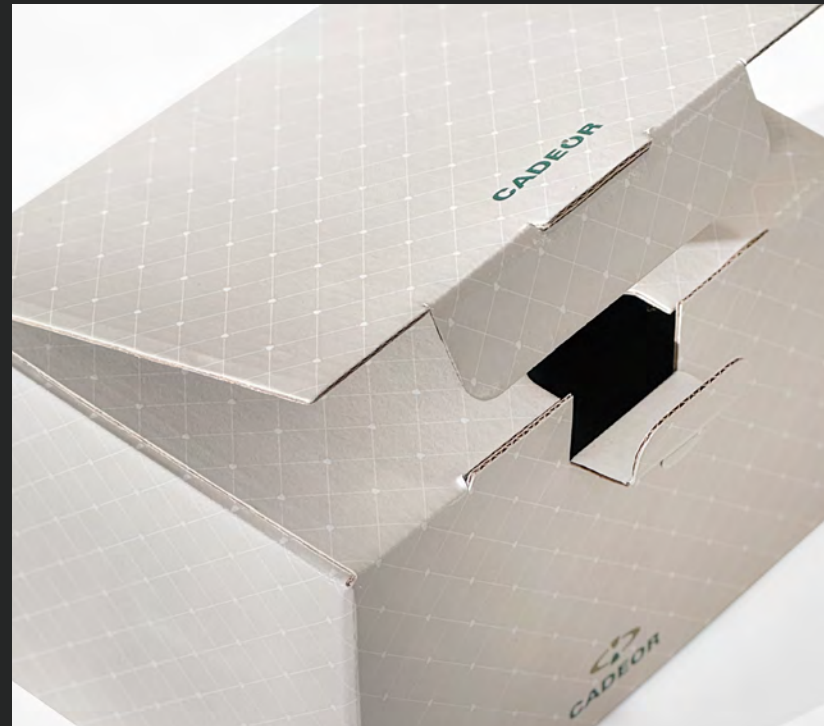
This is the most common style of rigid boxes, consisting of a separate lid and base. It offers a clean and classic look, suitable for a wide range of products.



SELF-ASSEMBLING

These boxes are designed for quick and easy assembly without the need for adhesives or additional tools. Typically flat-packed to save space in storage, these boxes can be easily folded into shape when needed, offering both durability and convenience.

TYPES OF CLOSURES



TUCK-IN FLAPS

A simple and efficient closure system where the box's flaps are tucked into pre-cut slots on the inside of the box. This design provides a secure closure without the need for adhesives, making it easy to open and close.

LOCKING TAB

A secure closure mechanism where additional tabs are inserted into slots, providing extra strength and stability. This closure ensures the box remains firmly closed while still allowing for easy opening.

RIBBON CLOSURE

Featuring a decorative ribbon that securely ties the box, which adds an elegant touch to the packaging. This closure combines aesthetics with functionality, allowing for easy opening and resealing.

MATERIALS



COATED PAPER

Coated paper has a smooth finish due to a layer of coating applied to the surface, enhancing its appearance and print quality. It is ideal for vibrant color reproduction and is commonly used for high-quality prints, brochures, and packaging materials. Coated paper is available in various finishes, such as glossy, matte, and silk.



UNCOATED PAPER

Uncoated paper has a natural, matte finish with a soft, tactile feel, offering an elegant and understated luxury. Its porous surface enhances printed colors, making it ideal for luxury shopping bags with a raw, refined aesthetic.



KRAFT

Kraft paper is known for its durability and rustic charm. Its versatility makes it suitable for various packaging solutions, offering an organic look that aligns with eco-friendly initiatives. Strong and recyclable, it serves as a sustainable choice for environmentally conscious brands.

PRINTING & FINISHING TECHNIQUES



OFFSET

The standard printing technique, suited for larger quantities. The inked image is transferred from a plate to the printing surface, making it ideal for detailed designs and vibrant colors.

HOTSTAMPING

Also known as foil stamping, this process uses heat and pressure to transfer metallic or pigmented foil onto the packaging. Hot stamping adds a reflective, shiny detail, typically (but not exclusively) in gold, silver, or other metallic finishes. It elevates the luxury feel of the packaging and is often used for logos, borders, or other focal design elements.

SCREEN PRINTING

Ideal for bold, vibrant colors, screen printing is often used on dark papers to achieve solid, opaque designs. This durable technique works well on various materials, making it a go-to for luxury packaging with striking and long-lasting visuals.

UV VARNISH

A clear coating is applied to specific areas (spot UV), which is then cured under ultraviolet light. Spot UV varnish is often used to highlight certain parts of the design, creating contrast between matte and glossy finishes.

PLASTIC LAMINATION

Plastic lamination applies a thin plastic layer to protect the packaging from moisture, scratches, and wear. This is essential in luxury packaging to maintain a pristine and high-quality appearance. This process is only used on coated paper and is optional, allowing for customization based on the desired finish and level of protection.

The available options include:

ANTI-RISK

Provides additional protection against scratches and damage, ideal for ensuring long-lasting, pristine presentation.

VELVET LAMINATION

Adds a soft, luxurious texture, giving the packaging a premium, tactile feel while maintaining durability.

GLOSS LAMINATION

Creates a reflective, shiny finish that enhances colors and makes designs stand out.

MATTE LAMINATION

Offers a smooth, non-reflective finish, providing a sophisticated look.

Let's make something unique together?

BACK TO FORM

