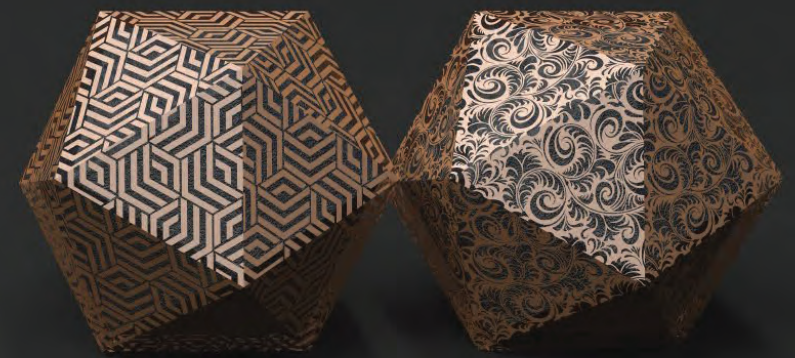


# Envelopes

---

All the details

**Open it! The future is here.**





# ENVELOPES



# PAPERS



## UNCOATED PAPER

Uncoated paper has a natural, matte finish with a soft, tactile feel, offering an elegant and understated luxury. Its porous surface enhances printed colors, making it ideal for luxury shopping bags with a raw, refined aesthetic.



## SILK PAPER

Silk paper is an innovative material made from renewable resources, offering a sustainable alternative to traditional plastic packaging. It is durable, flexible, and tear-resistant, making it suitable for various applications, including bags and envelopes. With a paper-like feel and superior moisture resistance compared to standard paper, this paper provides an effective solution for eco-friendly packaging needs.



## KRAFT

Kraft paper is known for its durability and rustic charm. Its versatility makes it suitable for various packaging solutions, offering an organic look that aligns with eco-friendly initiatives. Strong and recyclable, it serves as a sustainable choice for environmentally conscious brands.

# TYPE OF CLOSURES



## SELF-SEAL CLOSURE

This closure features a peel-and-stick adhesive strip on the flap, allowing for easy sealing. It offers convenience and a secure seal.



## RIBBON CLOSURE

Featuring a decorative ribbon that securely ties the envelope, adding an elegant touch to the packaging. This closure combines aesthetics with functionality, allowing for easy opening and closing.

# PRINTING & FINISHING TECHNIQUES



## OFFSET

The standard printing technique, suited for larger quantities. The inked image is transferred from a plate to the printing surface, making it ideal for detailed designs and vibrant colors.



## EMBOSSING

Creates a raised, three-dimensional design on the surface of the packaging, adding texture and depth. It's often used to highlight logos, patterns, or specific details, providing a tactile and elegant feel. Embossing can be combined with other printing techniques or finishes to further accentuate the raised elements.



## HOTSTAMPING

Also known as foil stamping, this process uses heat and pressure to transfer metallic or pigmented foil onto the packaging. Hot stamping adds a reflective, shiny detail, typically (but not exclusively) in gold, silver, or other metallic finishes. It elevates the luxury feel of the packaging and is often used for logos, borders, or other focal design elements.



## SCREEN PRINTING

Ideal for bold, vibrant colors, screen printing is often used on dark papers to achieve solid, opaque designs. This durable technique works well on various materials, making it a go-to for luxury packaging with striking and long-lasting visuals.

Let's make something unique together?

BACK TO FORM

