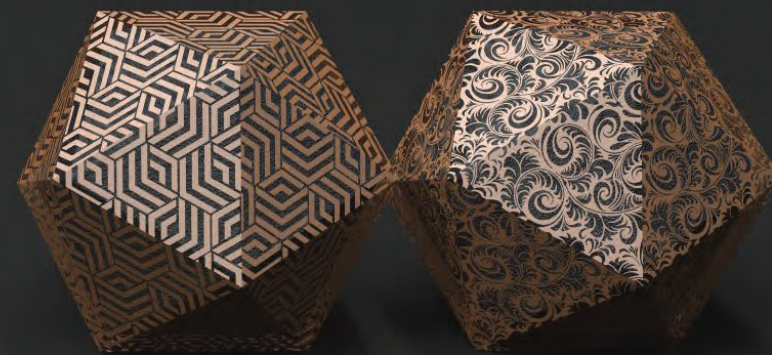


# Luxury Shopping Bags

---

All the details

Open it! The future is here.





# SHOPPING BAGS



# MATERIALS



## COATED PAPER

Coated paper has a smooth finish due to a layer of coating applied to the surface, enhancing its appearance and print quality. It is ideal for vibrant color reproduction and is commonly used for high-quality prints, brochures, and packaging materials. Coated paper is available in various finishes, such as glossy, matte, and silk.



## UNCOATED PAPER

Uncoated paper has a natural, matte finish with a soft, tactile feel, offering an elegant and understated luxury. Its porous surface enhances printed colors, making it ideal for luxury shopping bags with a raw, refined aesthetic.



## RECYCLED PAPER

Recycled paper brings sustainability to the forefront without compromising quality. It is an eco-conscious option for brands focused on reducing their environmental impact.



## TEXTURED PAPER

Textured paper enhances luxury packaging with its unique, tactile surface. Featuring subtle patterns, ribbed finishes, or intricate grain effects, it adds depth and sophistication to any design. This paper creates a distinct sensory experience, ideal for high-end brands seeking luxurious, premium packaging.



## KRAFT

Kraft paper is known for its durability and rustic charm. Its versatility makes it suitable for various packaging solutions, offering an organic look that aligns with eco-friendly initiatives. Strong and recyclable, it serves as a sustainable choice for environmentally conscious brands.

# PRINTING & FINISHING TECHNIQUES



**OFFSET**  
The standard printing technique, suited for larger quantities. The inked image is transferred from a plate to the printing surface, making it ideal for detailed designs and vibrant colors.



**EMBOSSING**  
Creates a raised, three-dimensional design on the surface of the packaging, adding texture and depth. It's often used to highlight logos, patterns, or specific details, providing a tactile and elegant feel. Embossing can be combined with other printing techniques or finishes to further accentuate the raised elements.



**HOTSTAMPING**  
Also known as foil stamping, this process uses heat and pressure to transfer metallic or pigmented foil onto the packaging. Hot stamping adds a reflective, shiny detail, typically (but not exclusively) in gold, silver, or other metallic finishes. It elevates the luxury feel of the packaging and is often used for logos, borders, or other focal design elements.



**SCREEN PRINTING**  
Ideal for bold, vibrant colors, screen printing is often used on dark papers to achieve solid, opaque designs. This durable technique works well on various materials, making it a go-to for luxury packaging with striking and long-lasting visuals.



**UV VARNISH**  
A clear coating is applied to specific areas (spot UV), which is then cured under ultraviolet light. This finish can be either glossy or matte, adding a layer of protection and boosting the visual impact. Spot UV varnish is often used to highlight certain parts of the design, creating contrast between matte and glossy finishes.

# HANDLES



## RIBBON WITH TERMINALS

Offering a high-quality finish and added durability, with available materials including satin, grosgrain, cotton, and twill.



## RIBBON WITHOUT TERMINALS

This is a premium handle design. The handle is directly glued to the bag's surface, providing a more elegant and exclusive look.



## TEXTILE CORD

Soft and durable, available in different thicknesses and colors. Often used in luxury packaging.



## DIE-CUT HANDLES

Simple, rectangular cut-outs, often reinforced for durability. You can customize the shape of the die-cut handles in unique designs to match branding or aesthetic preferences.

# PLASTIC LAMINATION

Plastic lamination applies a thin plastic layer to protect the packaging from moisture, scratches, and wear. This is essential in luxury packaging to maintain a pristine and high-quality appearance. This process is only used on coated paper and is optional, allowing for customization based on the desired finish and level of protection.

The available options include:

## ANTI-RISK

Provides additional protection against scratches and damage, ideal for ensuring long-lasting, pristine presentation.

## VELVET LAMINATION

Adds a soft, luxurious texture, giving the bag a premium, tactile feel while maintaining durability.

## GLOSS LAMINATION

Creates a reflective, shiny finish that enhances colors and makes designs stand out.

## MATTE LAMINATION

Offers a smooth, non-reflective finish, providing a sophisticated look.

Let's make something unique together?

BACK TO FORM

